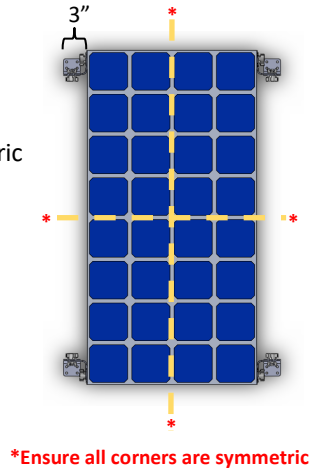


INSTALLATION INSTRUCTIONS

Step 1

Determine Layout

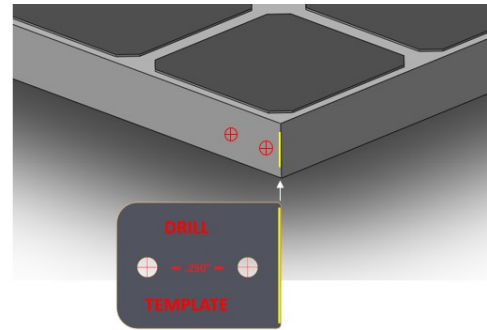
- Ensure adequate clearance
- Ensure all corners are symmetric
- Avoid shadows where possible
- Max Roof Clearance: 2 inches



Step 2

Drill Holes using Template

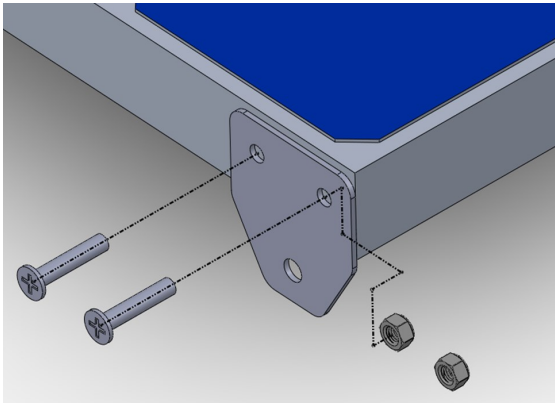
- Align yellow edge with corner
- Ensure all corners are symmetric



Step 3

Attach Flat Brackets

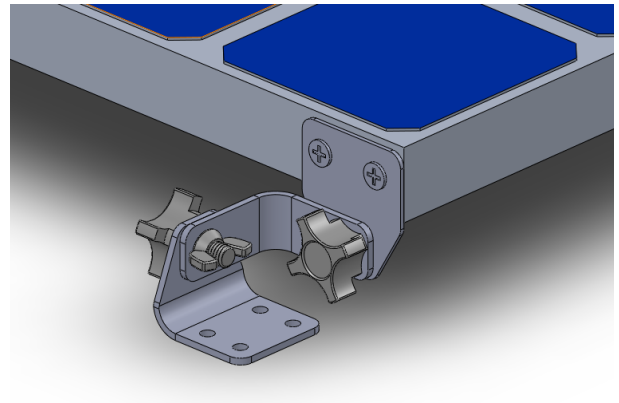
- Using screws and lock nuts:



Step 4

Assemble Bent Brackets

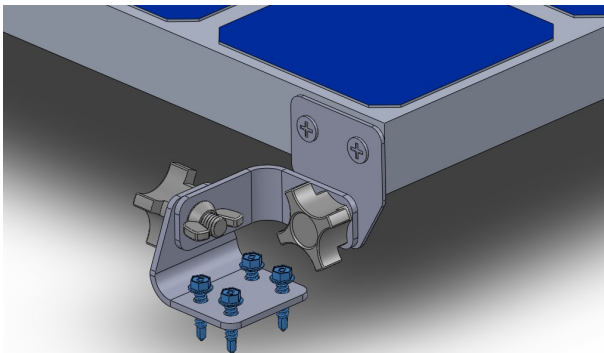
- Using hand knobs, wing nuts, and lock washers:



Step 5

Secure to Roof

- Using self-tapping roof screws:



- Apply self-leveling lap sealant at roof contact as needed

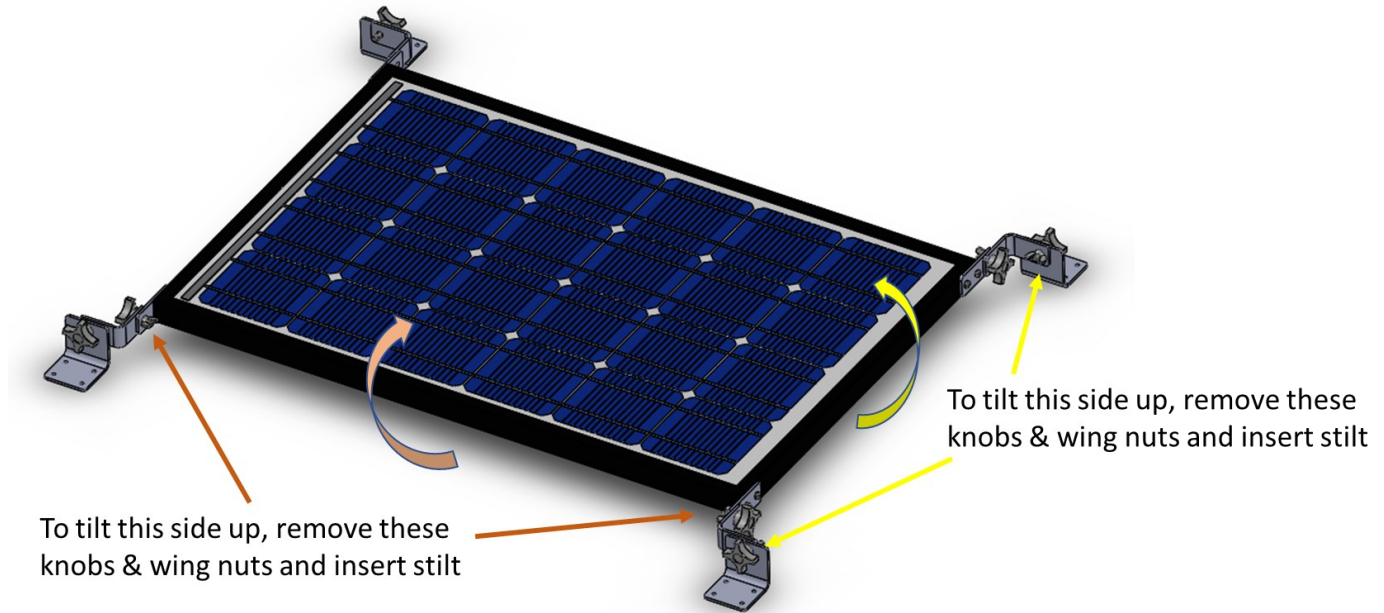
Step 6

Configure Wiring

- Tilt the wiring block to the highest position before attaching wiring:

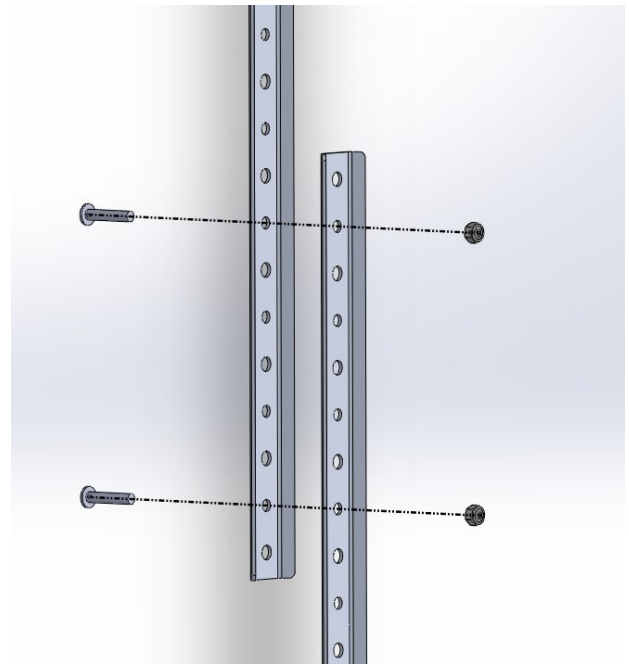


How to Tilt your Panels



50" Stilt Assembly

- Use provided screws and lock nuts
- Secure two 30" stilts together to form a composite stilt up to 50" long.
- **Do not exceed 50 inches**
 - 10" overlap required for rigidity
- Any length can be achieved between 30"-50" with 2" increments.



Notes & Operation

- If unsure about any part of these instructions, seek professional help. 4 Way Solar LLC will not be held liable for improper installation or operation.
- Always stow your panels and check that all mechanical connections are tight & secured before transportation.
- Never install this system on a surface that is not structurally sound, rotten, soft, or compromised in any way.
- For any further questions, you can reach me directly at: Neil@4waysolar.com

Happy Adventuring!